



CYMDEITHAS RHEILFFORDD FFESTINIOG RAILWAY SOCIETY



We hope everyone comes to the railway because they enjoy the work, but the fun doesn't stop at the end of the working day. The Ffestiniog Railway has a great social life - something for everyone.

Many people enjoy meeting up in Spooner's or one of the other pubs in Porthmadog for dinner or a drink in the evenings. Parties (usually involving a special train) are a regular feature, especially at the Easter and August bank holiday weekends and, for the less active, the Parks and Gardens department often runs special evening trains which are less boisterous and timed to suit those with a family.

Of course the social life doesn't have to end at the end of your visit. Groups of friends from the Ffestiniog Railway often meet up in other parts of the country and friendships made on the Ffestiniog Railway often lead into other hobbies and interests which have nothing to do with railways.

Minffordd Hostel is available to volunteers on the Ffestiniog Railway.  
For more information on how you can volunteer on the railway, see our  
Discover Volunteering pages on the website.

[www.ffestiniograilway.co.uk](http://www.ffestiniograilway.co.uk)      [www.ffestiniograilway.org.uk](http://www.ffestiniograilway.org.uk)  
[www.festtravel.co.uk](http://www.festtravel.co.uk)

Ffestiniog Railway Society Ltd  
A company limited by guarantee no. 542449  
Registered Charity no. 1064178



CYMDEITHAS RHEILFFORDD FFESTINIOG RAILWAY SOCIETY



# MINFFORDD HOSTEL



A GUIDE FOR YOUR FIRST VISIT  
(AND A REMINDER FOR  
YOUR RETURN VISITS)  
2019 VERSION.



**Hostel Warden : Ben Rosen 07860-417569**

telephone : 01766 771280, mobile : 07379-763448



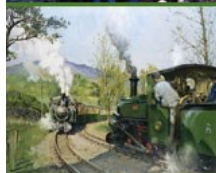
**email : [hostel@ffwhr.com](mailto:hostel@ffwhr.com)**



**Bookings can be made by emailing above :**



**Payments :** are made by cash or cheque (payable to the *Ffestiniog Railway Society*) to the Hostel Warden during your stay Hostel.



**Director with responsibility for Hostel :**

**Daniel Jones.**



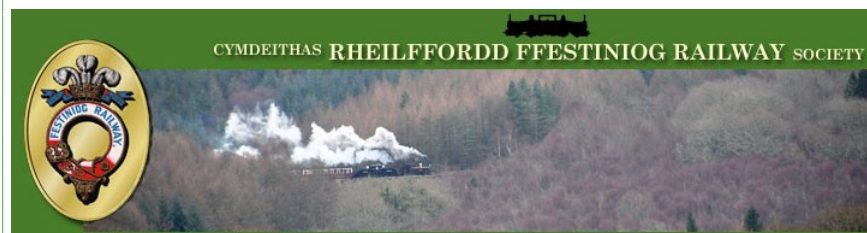
**Duty Wardens :** Oliver Bennett ,Chris Clark, Daniel Jones, Becky Knight,



**Address and postcode of the Hostel :**  
Minffordd Hostel, Minffordd,  
Penrhyndeudraeth, Gwynedd. LL48 6HF. Grid  
reference SH598379. Co-ordinates N52° 55'  
32", W4° 05' 12"



**Emergencies :** **Fire, police and ambulance 999,**  
NHS Direct - 0845 46 47, Local Doctor - 01766  
-771955, surgery in Penrhyndeudraeth, Minor  
Injuries Unit at Tremadog - 01766-510010,  
nearest public telephone - at the crossroads after  
turning right onto the main road.



## Ffestiniog Railway Society

Most people who volunteer on the Ffestiniog Railway join the Ffestiniog Railway Society. Annual membership costs are £26 (Full member), £20 (Associate - spouse of full member), £22 (Senior citizen - over 60 years), £12 (Volunteer and Student under 25), £12 (Junior - under 18 years).

In return for membership, free travel is offered on the Ffestiniog Railway and an excellent Ffestiniog Railway Society Magazine is posted to members' home addresses every quarter.

The Ffestiniog Railway Society has over 5,000 members, financially supports the running of the Hostel and contributes towards the upkeep of the Railway.

*This booklet has been prepared so that you have a superb time during your stay at the Hostel.*

*However, we do welcome any constructive comments about the content of this booklet, especially places to eat out, so we may let the next residents know.*

## ***Beddgelert***

**PRINCE LLEWELLYN HOTEL** - hotel/pub close to the river bridge. Good food and Robinson's beer. Pleasant atmosphere. 01766 890242

## ***Waunfawr***

**SNOWDONIA PARC HOTEL** - pub beside main road with Welsh Highland station behind the car park. Serves Marston's along with its own brewed bitter. Variety of good food, good value. Nice trip out on a summer evening. 01286 65021



## **Welcome - Croeso**

Welcome to Minffordd Hostel, where you are staying for the time you are volunteering. We do hope you enjoy your stay and that your time at the Hostel enhances your visit to the railway.

We have designed this leaflet to help you find your way around the Hostel to make it as homely as possible for you. We welcome any constructive suggestions you have for future improvement - after all, the Ffestiniog Railway Society and Ffestiniog Railway Company both appreciate the time, skills and effort you are giving to maintain this Heritage Railway.

Our Hostel can accommodate up to 38 volunteers at any one time and, during the summer months, the occupancy rate reaches over 99%. To make this work, we expect you to participate actively in its running so that we may keep your Hostel fees at a low figure.

*When you make your booking, you agree to abide by the Hostel Accommodation Policy as stated on the next page, on the website and in handouts in each module and in the entrance foyer.*



## **Hostel accommodation policies**

Residents of the Hostel are expected to help keep the building clean and tidy, making sure their module kitchen area is kept in a clean condition. In addition to this general common sense requirement, two specific policies exist relating to under -16s and under-18s respectively. These policies are reproduced here.

### ***Conditions of residence for those under 16 years of age***

Persons under the age of 16 may not reside in Society controlled accommodation without being accompanied by an adult family member, or by a mature adult willing to accept responsibility for them on a day-to-day basis. The adult must be acceptable to the Hostel Warden and must not be the Hostel Warden, or any of his deputies.

### ***Alcohol policy***

Anyone under the age of 18 found to be under the influence of, or in the possession of, alcoholic drink or illegal drugs in Society or Company controlled accommodation will be banned from residing in Society and Company controlled accommodation for a period of three months and for a period of twelve months for any subsequent offence. The ban is automatic and non-negotiable.

01766 780200

### ***Llanfrothen***

**BRONDANW ARMS / THE RING** - small village pub on A4085 Penrhyndeudraeth to Beddgelert road. Live music Friday and/or Saturday. Good food, but children are restricted to lower room at the back.

### ***Criccieth***

**GEORGE IV HOTEL** - on main road through Criccieth. Good value traditional meat and two vegetable meals in residential restaurant. No frills. Car park opposite. 01766 522168

### ***Gellilydan***

**BRYN ARMS** - village signposted off A487 Trawsfynydd to Maentwrog towards the top of the hill. Recommended. 01766 590379

### ***Llanbedr***

**VICTORIA HOTEL** - a little out of the way, but the service is good, the food is good and the portions even better. 01341 241213

### ***Bryncir***

**BRYNCIR ARMS** - opposite the cattle market in village on A487 Porthmadog - Caernarfon road. Father and son enterprise. Generous portions of tender Welsh lamb and huge mixed grills. 01766 530816

## *Maentwrog*

**THE GRAPES** - ancient coaching inn in village just off A487 Trawsfynydd to Porthmadog road. Good choice of beers and specialises in bar food. Room to the left is ideal for family parties plus an open air balcony at the back for the summer. Sunday roasts excellent. The menu is wide and appetising if not a little more expensive than some, but food is provided to fill large plates. Often busy, especially at the weekend. 01766 590208

**THE OAKLEY ARMS HOTEL** - situated on the main A487 road between Porthmadog and Trawsfynydd, half a mile before Maentwrog village. Good bar food and draught ales. 01766 590277

## *Blaenau Ffestiniog*

**THE CHIPPY** - highly recommended fish and chippery on Blaenau Ffestiniog High Street which provides the food for the Ffestiniog Railway Fish and Chip trains.

## *Tremadoc*

**THE GOLDEN FLEECE INN** - on the left of the town square, as you approach from Porthmadog. Cosy aged pub with snug and bar with open fire. Generous helpings of tasty bar food with chunky chips and garnish. Upstairs Bistro at rear with more menu and prices. 01766 512421

**THE UNION INN** - on the opposite side of the town square. Slightly more select bar menu with slightly higher prices but recommended. 01766 512748

**FISH AND CHIP SHOP** - on corner of town square. Good value food.

## *Harlech*

**MAES Y NEUADD HOTEL** - quality country hotel and restaurant up a winding wooded lane, signposted inland off A496 at Talsarnau, north of Harlech. Lovely quiet location. Superior French cuisine at superior prices.

## Your Arrival at the Hostel

You will find the hostel situated adjacent to both the Ffestiniog Railway and National Rail stations at Minffordd. For those who arrive by National Express coaches at Porthmadog, you will need to take one of the local buses, Pwllheli - Porthmadog - Blaenau Ffestiniog (Express Motors) Route No 3B (Route 3 on Sundays and Public Holidays), Porthmadog - Blaenau Ffestiniog or Bangor - Porthmadog - Dolgellau - Aberystwyth (Arriva) Route No T2 (limited stop route, but stops in Minffordd). Copies of combined bus and train timetables, Gwynedd Public Transport Maps and Timetables, are available in the Hostel and from the Tourist Information Office in Porthmadog. Don't hesitate to contact our own Ffestiniog Travel on 01766 516010 - they will be delighted to book your travel tickets for you.



If you arrive by car, we have a car park within the hostel

grounds. The gate to access Minffordd Hostel and Yard is locked with a standard railway padlock - if you do not have a key, please park on the approach to the gate, making sure you do not block the roadway, and ask at the Hostel for someone to unlock the gate for you. If there is no-one in the Hostel, rather than block the approach to the gate, we suggest that you find someone in the yard from whom you could borrow a key. Residents may obtain a key for the gate from the Warden for the duration of their stay. If he has any spare. For access for fire engines, we do not allow parking on the drive leading down to the hostel but we appreciate your sensible parking elsewhere. By all means, do use the field if necessary.

### Booking in to the Hostel

On arrival, please enter the building by the main entrance, facing the railway line. Immediately on entering the hall, you will see a notice-board on your right where we will have posted any changes of room allocations which have been necessary since you booked. Please sign the register not only for the Warden's record but also for cases of emergencies.

#### **Booking Fees are as follows :**

<b>Non Working Stay</b>	<b>£15.00</b>	
<b>Working Stay (FRS Member )</b>	<b>£4.00</b>	
<b>After 20 nights</b>	<b>£3.00</b>	
<b>Module 6 (FRS Member)</b>	<b>£8.00</b>	
<b>Non Member</b>	<b>£10.00</b>	
<b>Camping</b>	<b>£2.50 no Electric</b>	<b>£6 Electric hook up</b>

here as you don't sit down! 01766 512589

**YR WYLAN** - High Street Pleasant surroundings; three course meals, great value, especially the Welsh lamb. "Sell it cheap, pile it high". 01766 513188

**THE GRAPEVINE BISTRO** - opposite the *Royal Sportsman Hotel* past the island at the top of the High Street. Interesting slightly up market menu at realistic prices. Freshly cooked to order. Can be busy, so worth booking, but not essential. 01766 514230

**Y HEN FECWS** - between the *Ship* and the *Passage to India* on Lombard Street. Bistro with accommodation. Menu includes daily specials.

**TAFARN PENCEI** - on Harbour at bottom of steps that lead up to Y Garth. Bar meals plus Sunday lunch.

### *Minffordd*

**CASTELL DEUDRAETH** - recently restored Castle style hotel with excellent views out over the Dwyryd estuary. Signposted from the crossroads in Minffordd village towards Portmeirion. Lavishly appointed with prices to match. Excellent food for that special occasion. Booking recommended. 01766 772400

**PORTMEIRION HOTEL** - follow road as above, but down through Italianate village of Portmeirion to waters edge, where TV cult programme *The Prisoner* was filmed. Expensive artistic designer food in unusual surroundings with unparalleled views across the Dwyryd estuary. Booking required. 01766 770228

### *Penrhyndeudraeth*

## WHERE TO EAT AROUND THE FFESTINIOG RAILWAY

*Compiled by Howard Wilson*

Eating out often enhances a visit to the Ffestiniog Railway and can very much be the making of a special occasion. At the end of a hard day's work on the Railway, it may prove to be a simple and welcome answer to a self catering problem and so this collection of eating solutions may assist those desperately seeking sustenance, or those who simply want a change of environment for the evening.

All are recommended by individuals who have tried them and all have proved to be to their liking. I have tried to provide information which will help categorise the style of dining and will show that a "take away" is really the only place where working overalls will be acceptable!

As most visitors to the area have transport available to them, the venues are within a "reasonable radius" of the line and on a summer evening may involve a pleasant run out which should whet the appetite all the more.

### *Porthmadog*

**SPOONER'S** - Harbour Station. Café and bar providing a wide variety of snacks and good value meals for Ffestiniog Railway travellers and visitors alike. Variety of good real ales in railway museum style surroundings. Check for bar meal times out of season.

**PASSAGE TO INDIA** - Bank Place. Turn left off the High Street at the crossroads in the centre of town, not far down on left hand corner. Best Indian cuisine in the area. 01766 512144

**ALLPORTS** - Madoc Street. Turn right off the High Street in the centre of town down Snowdon Street to where it crosses Madoc Street. Chip shop on opposite corner, often cooks to order. No worries about dirty overalls

## The Modules

You will find five Modules in the Hostel. Module 1 is on the left in the lobby and Module 2 is on the floor above, directly above Module 1. Module 3 is down the stairs, through the door on the right and at the end of the corridor. By going up the stairs ahead, the door for Module 6 is immediately in front of you. Finally, Module 4 is through the door to the right of Module 6 and at the end of the corridor.

Each module has an electronic door lock with a key pad and, to enter your module, you use the numerical code which we gave you in your booking confirmation. Please contact the Warden should you have mislaid this. For security, we change these codes every 6 months.

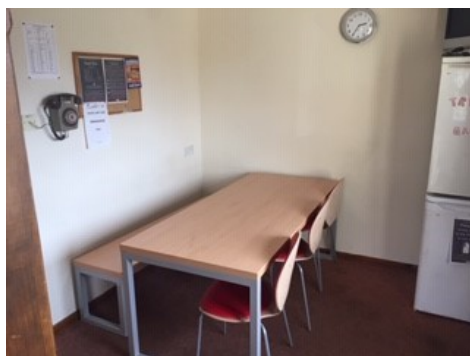
As to food, whether you are a masterchef or just a culinary starter, the kitchen facilities include a cooker, fridges, freezers, microwave, kettle and toaster, as well as an array of crockery, pots, pans and utensils. Whilst you might be the only one in your module on the

day you arrive, others will be booked in shortly after and we do ask that you wash, dry and put away your dishes as you go along. Under the worktop, there are plastic boxes to hold your own non-perishable food and other items. The fire detection system in the kitchen means that, whenever you do any cooking, you must switch on the extractor fan and ensure that the kitchen door is closed. Should the alarm be set off as a result of not using the extractor fan or door being left open, a fine of £10 will be imposed to go towards the cost of resetting affected electrical equipment.

The bedrooms, corridor and all of the public areas of the Hostel are covered by smoke detectors but it is against the Society's policy to smoke anywhere in the Hostel.

Do, please, keep the bathrooms clean - we provide cleaning materials and, if you need more, you will find them in the laundry room. Hanging in the middle of the cupboard unit in the laundry room is the key for the toilet paper container, with more paper close by. The laundry room is on the ground floor, through the first door on the right from the entrance. It is your responsibility to keep your module clean.

Wifi is available throughout the Hostel free of charge. Password is displayed in all modules.



the laundry room, replacing them with clean ones from the cupboards. Please empty the bin in your module into the container outside, replacing the bin liner with a new one from the laundry room. On your way out, do not forget to sign out in the register. If you borrowed a gate key from the Warden, please return it before leaving or put it through the gate letterbox (but don't forget to get your car through the gate first!!!).

**As you know, July and August are our busiest times and, in these months and other hectic times, you must vacate your room by 11.00 am.** We appreciate that you maybe working that day before you go home so do please store your luggage in the laundry room or, by prior arrangement with the Warden, in the Warden's office. You may use the shower and toilets in the laundry room during your final day should you wish.

If you find you have left something behind, do contact the Warden who will be pleased to keep it safe until your next visit.

We hope you have enjoyed your time on the Railway.

***Thank you for using Minffordd Hostel and we look forward to welcoming you on your return soon.***





## Amenities and Food Shops

Unfortunately, there are no shops at Minffordd but it is just a short journey to Penrhyndeudraeth, where there is a Spar shop and a good butcher's, Post Office and paper shop. Further afield in Porthmadog, the Tesco store is on Tremadoc Road while both Aldi and Lidl are on the Penamser Road leading to Criccieth. Wilkinsons is situated alongside the inner harbour by the Welsh Highland Railway line (turn right immediately after the Shell garage after Harbour Station).

The local doctor's surgery is in Penrhyndeudraeth on the left just before the crossroads. Should you need Accident and Emergency at a hospital, Ysbyty Alltwen is a Minor Injuries Unit at Tremadog. There is also a chemist close to the doctor's surgery and also at the crossroads in Porthmadog. Penrhyhn and Porthmadog have cash machines on various buildings. Porthmadog has a Barclays and HSBC bank branch.

If you would like to make your stay memorable by eating out, there is a list of various restaurants and pubs towards the end of this booklet.

## Leaving the Hostel

We are sure that, when you arrived, your Module will have been clean and tidy. However, to allow us to charge such a small amount for your stay, we insist that you clean your own module. The central communal areas are cleaned regularly by the Warden or Duty Warden, **but the cleanliness of the individual modules is your responsibility.** Please wash up promptly and keep the shower rooms clean and tidy. It is usual practice to clean and Hoover your room before departure and to help clean the remainder of the module during an evening or a day off. Please try to leave the module as you would expect to find it!

On departure, please leave your room in a clean and tidy state. When you arrived, you will have found only food belonging to other residents. Please place dirty kitchen towels and tea towels in the box in

## Using the Hostel

Before you set out from home, don't forget to bring a sleeping bag, pillowcase(s), towels and toiletries, etc, with you. We will provide a pillow and a cover for the mattress.

You are welcome to come and go from the hostel as you wish. By all means, use any of the facilities provided so it becomes almost home from home. However, whilst you use the hostel as it most suits you, we do expect you to be considerate to other users. Think about the high summer period - some of your colleagues may have very early starts in the mornings. We do thank you to bear this in mind and keep noise to a low level at night after **11.00 pm**. The lounge or library are the best places to sit and chat late at night. Similarly, if you are one of those getting up early, your fellow occupants would not like to be woken up at dawn! Don't forget to put your mobile on silent (or switch it off) at night too. **If you have visitors at Hostel please note they will be asked to leave building at 11.00pm.**

We do not allow boots to be worn beyond the tiled floor in the entrance hall. A charge could be levied if there is damage done to the carpets by not following this.



We know that breakages occur from time to time and things stop working. Do, please, let the Warden know about these as soon as possible.

## **Other Facilities and Notes**

For those who stay longer than a few days, you will be pleased to know we have washing machines and tumble dryers in the laundry room which are there for your use for which we ask a small charge to cover the running costs. If you would like a really smart appearance, take advantage of the iron and ironing board there too. Also in the laundry room, there is a further toilet and separate shower room.

Past the door to Module 2 on the first floor, you will find the common room with satellite television, video and a dvd player. Taking the stairs to above the common room, you will find a combined library and meeting room.



If you have any problems or questions about booking in, please contact the Duty Warden. His or her name and contact details are always on the notice-board close to the room allocation list.

